

2019-2021 FY Waste Report

UCLA OFFICE OF SUSTAINABILITY

ISSUED 08.25.2021

UPDATED 01.26.2022

Introduction

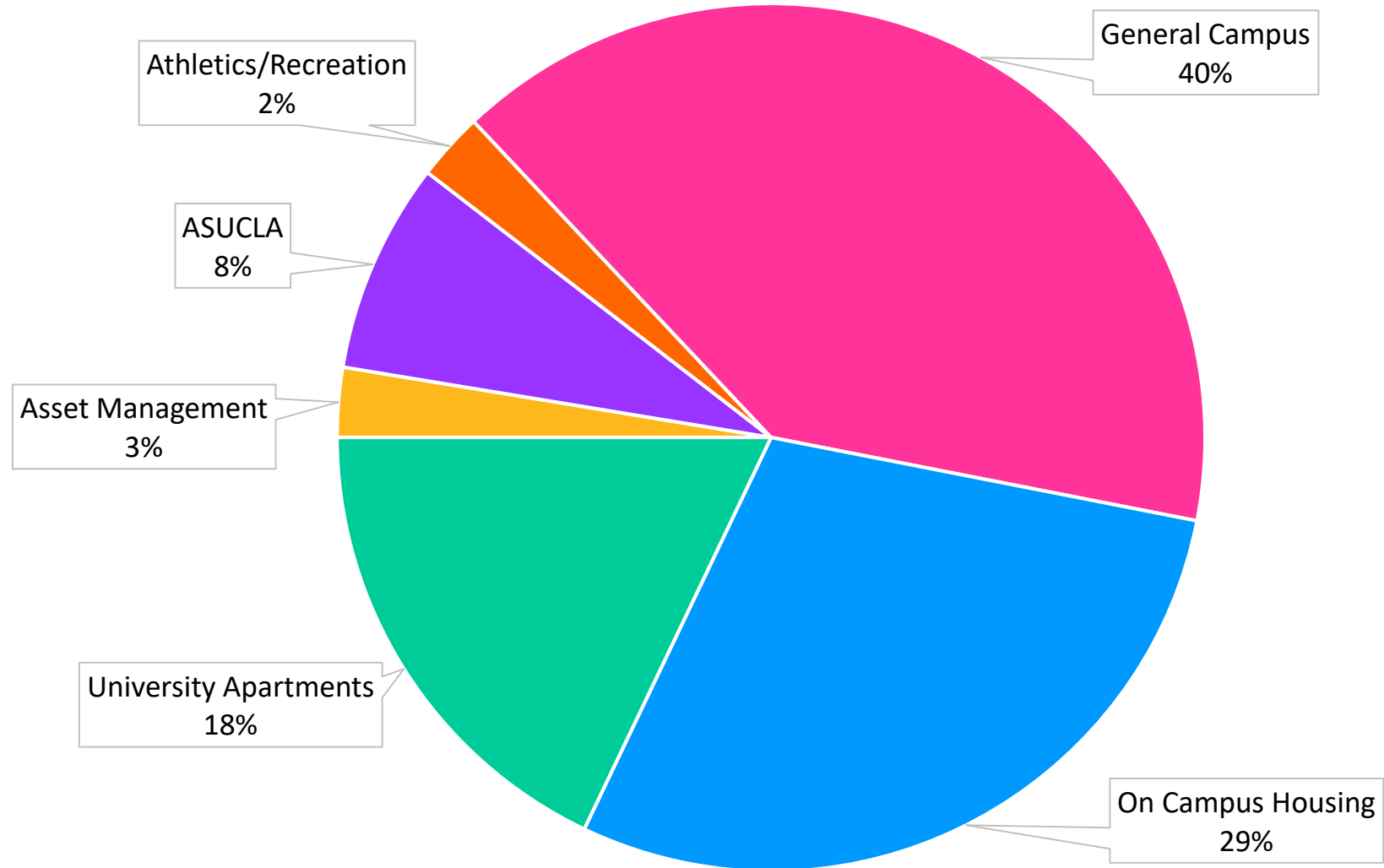
The purpose of this report is to document the progress toward our zero waste targets which include a 90% diversion rate and 25% waste reduction from our 2015-16 FY levels by 2025.

By breaking down the data by department, this report provides specific metrics for account holders and promotes transparency and accountability.

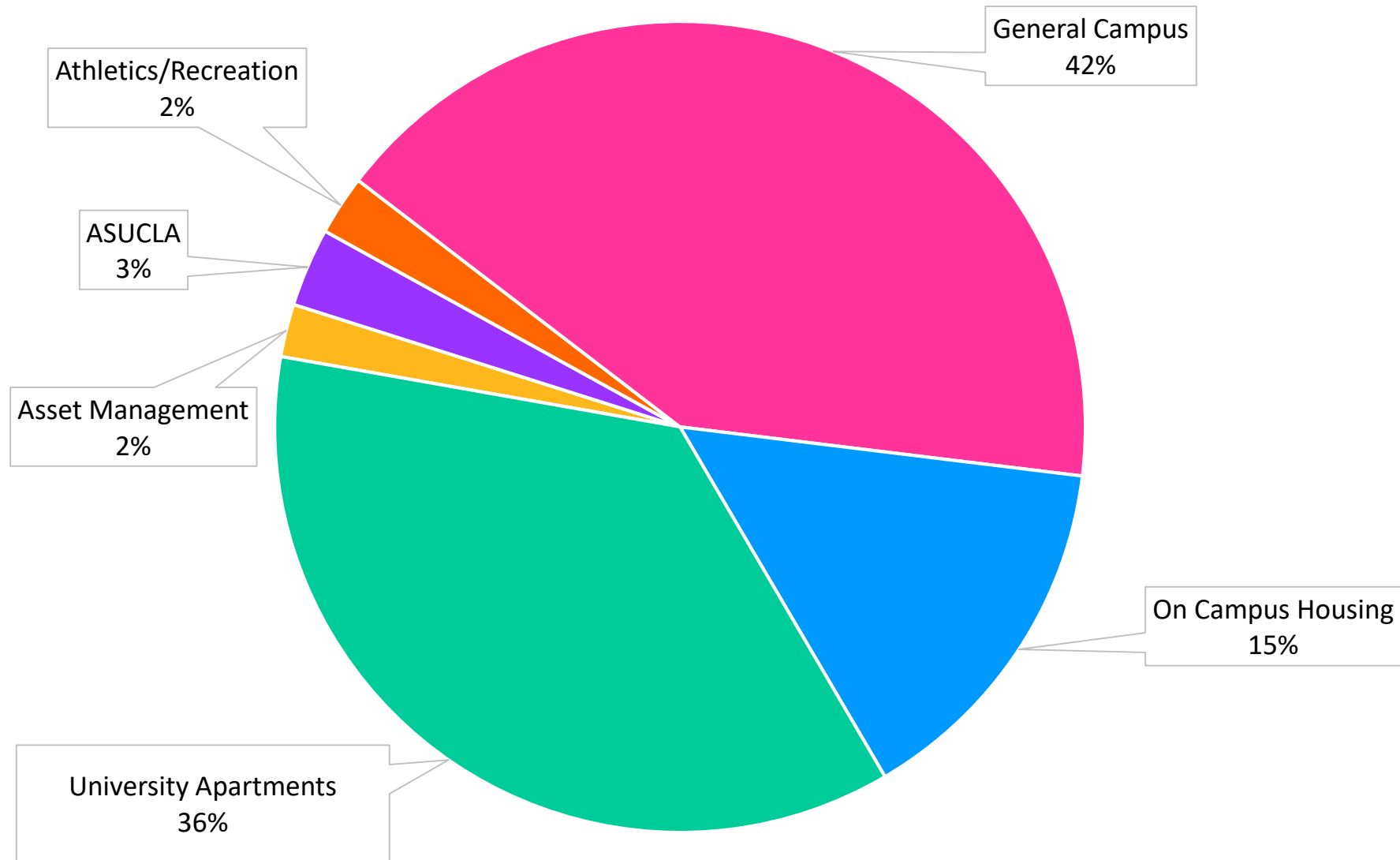
This report differs from the zero waste data in the UC Annual Sustainability Report in the following ways:

- ▶ Reports are issued quarterly/monthly
- ▶ Reports show waste metrics per department rather than as a whole campus
- ▶ Reports exclude materials such as landscape and operational waste which are managed at a campus-wide level rather than a department level
- ▶ Reports exclude waste service from specialized vendors other than our waste hauler, Athens Services
- ▶ Reports exclude temporary service bins for construction and one-time events

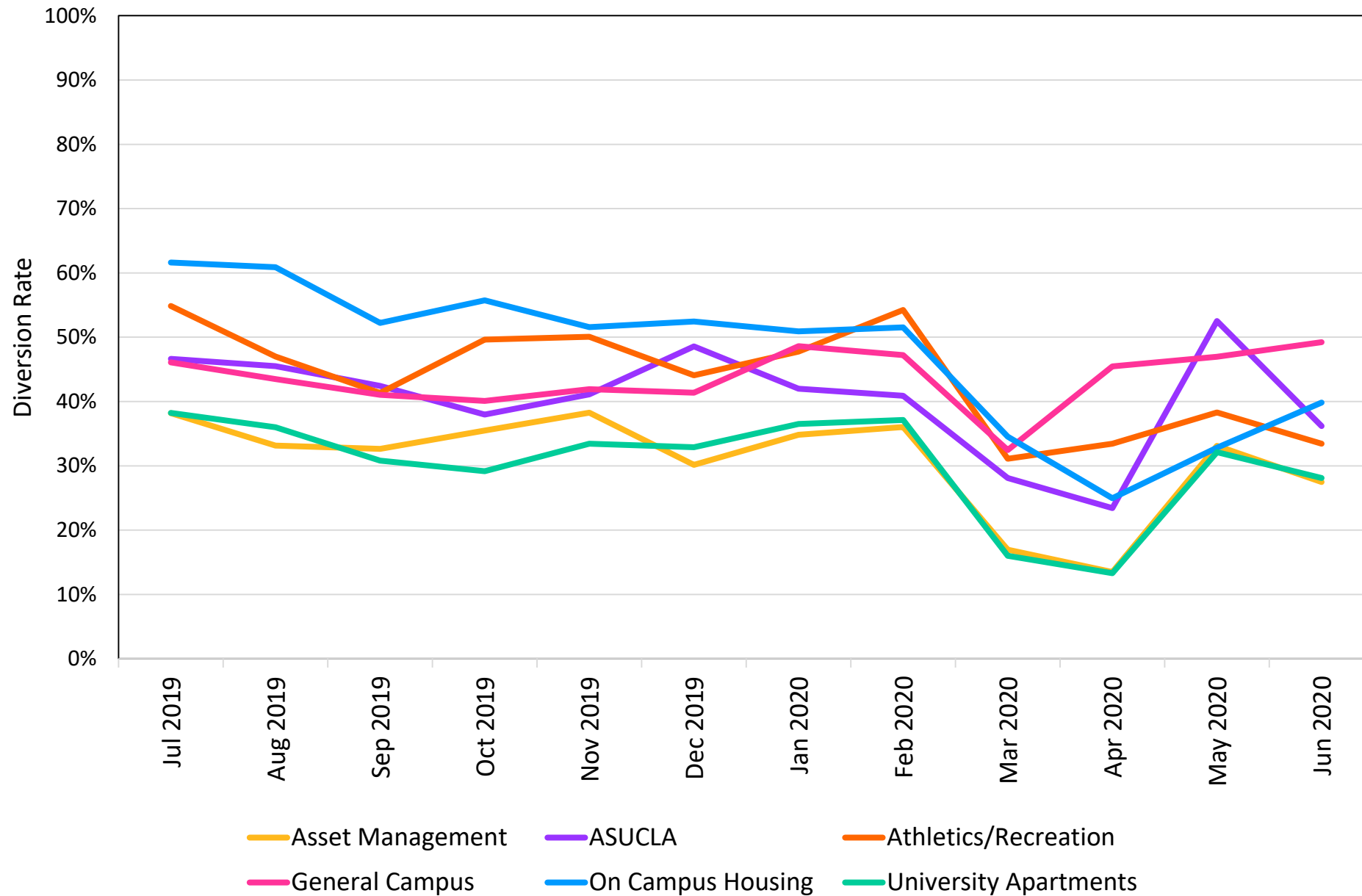
2019-20 FY Tonnage By Department Account



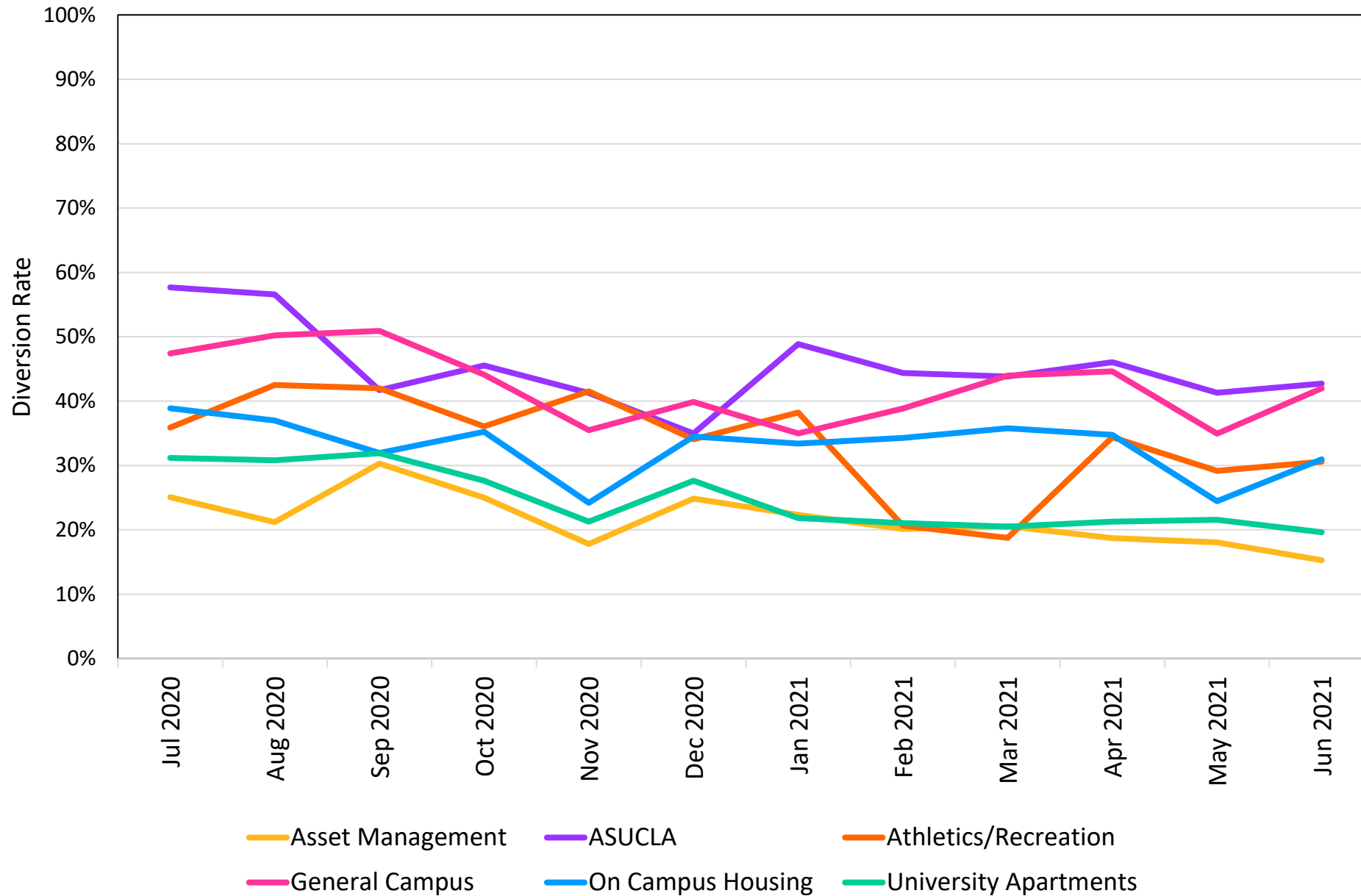
2020-21 FY Tonnage By Department Account



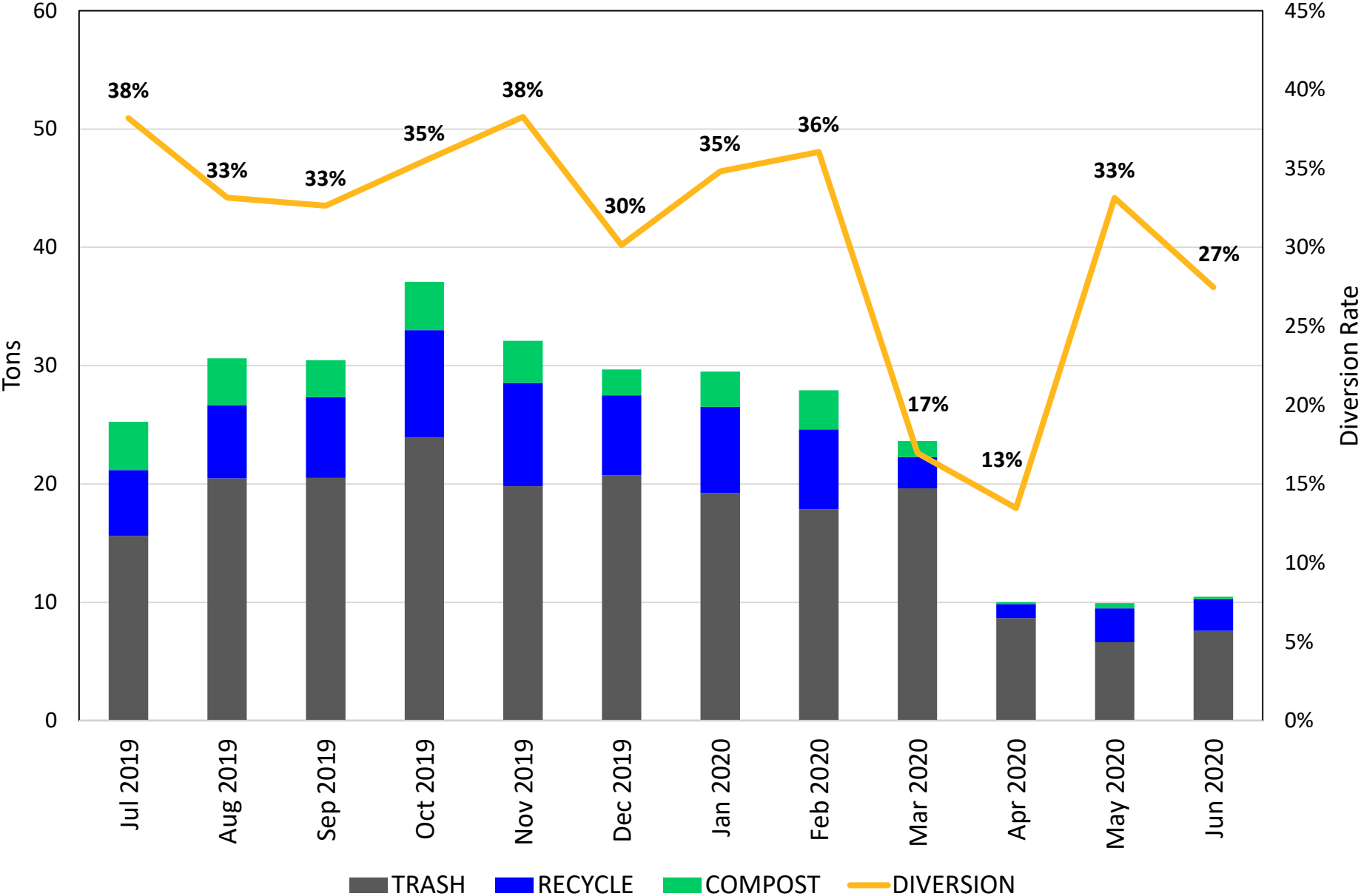
2019-20 FY Diversion Rate By Department Account



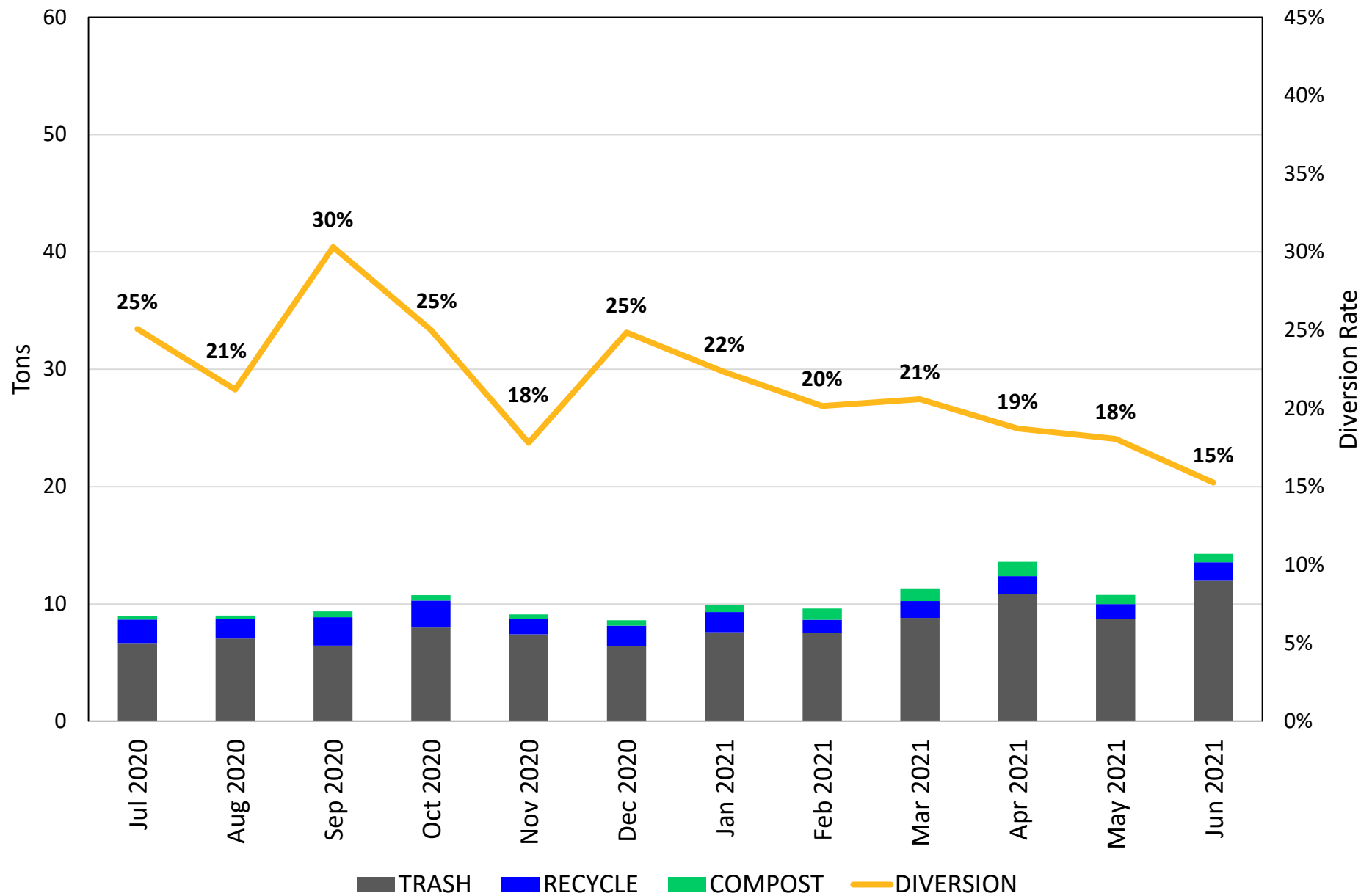
2020-21 FY Diversion Rate By Department Account



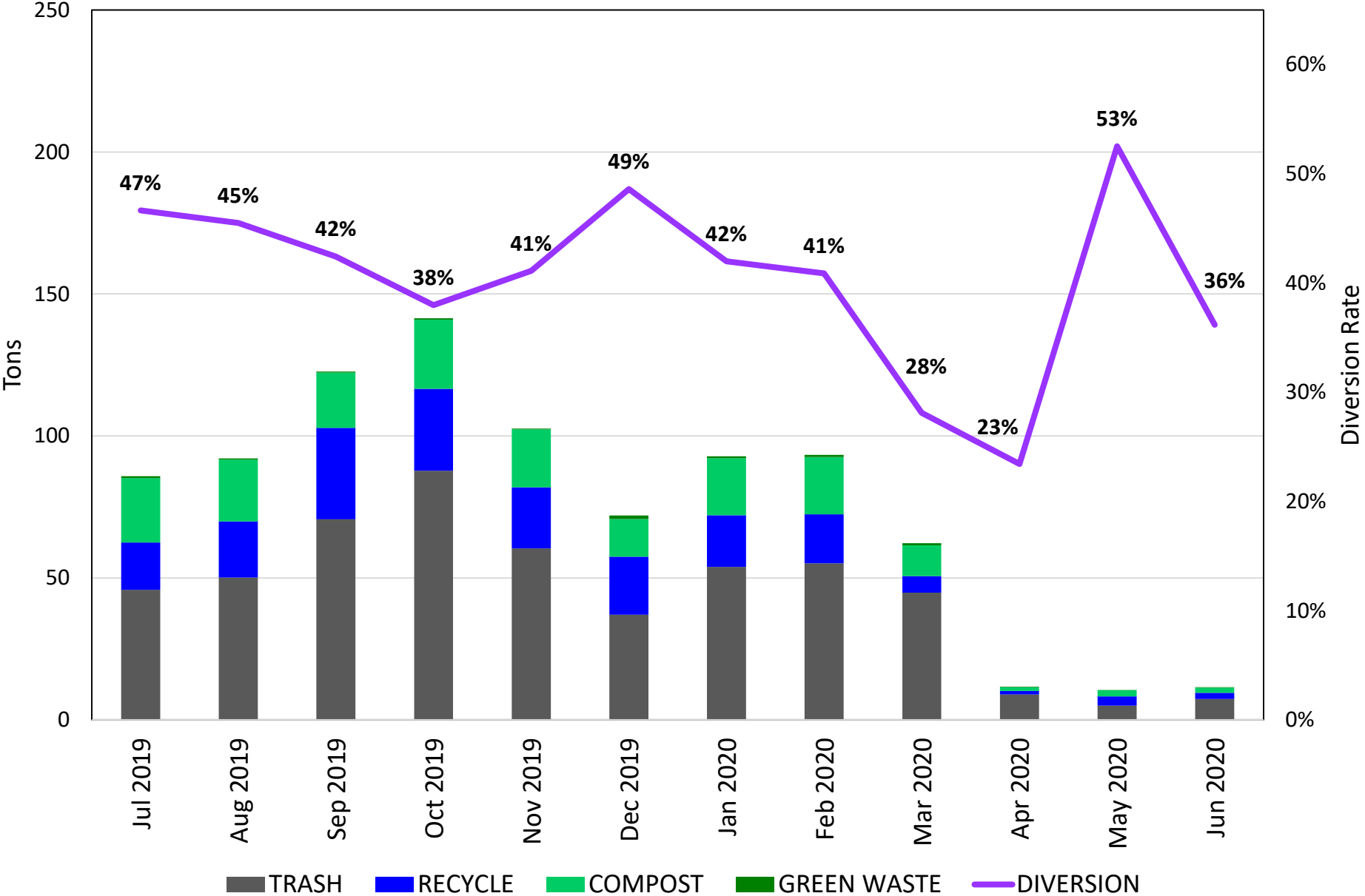
2019-20 FY Waste Tonnage and Diversion Rate for Asset Management



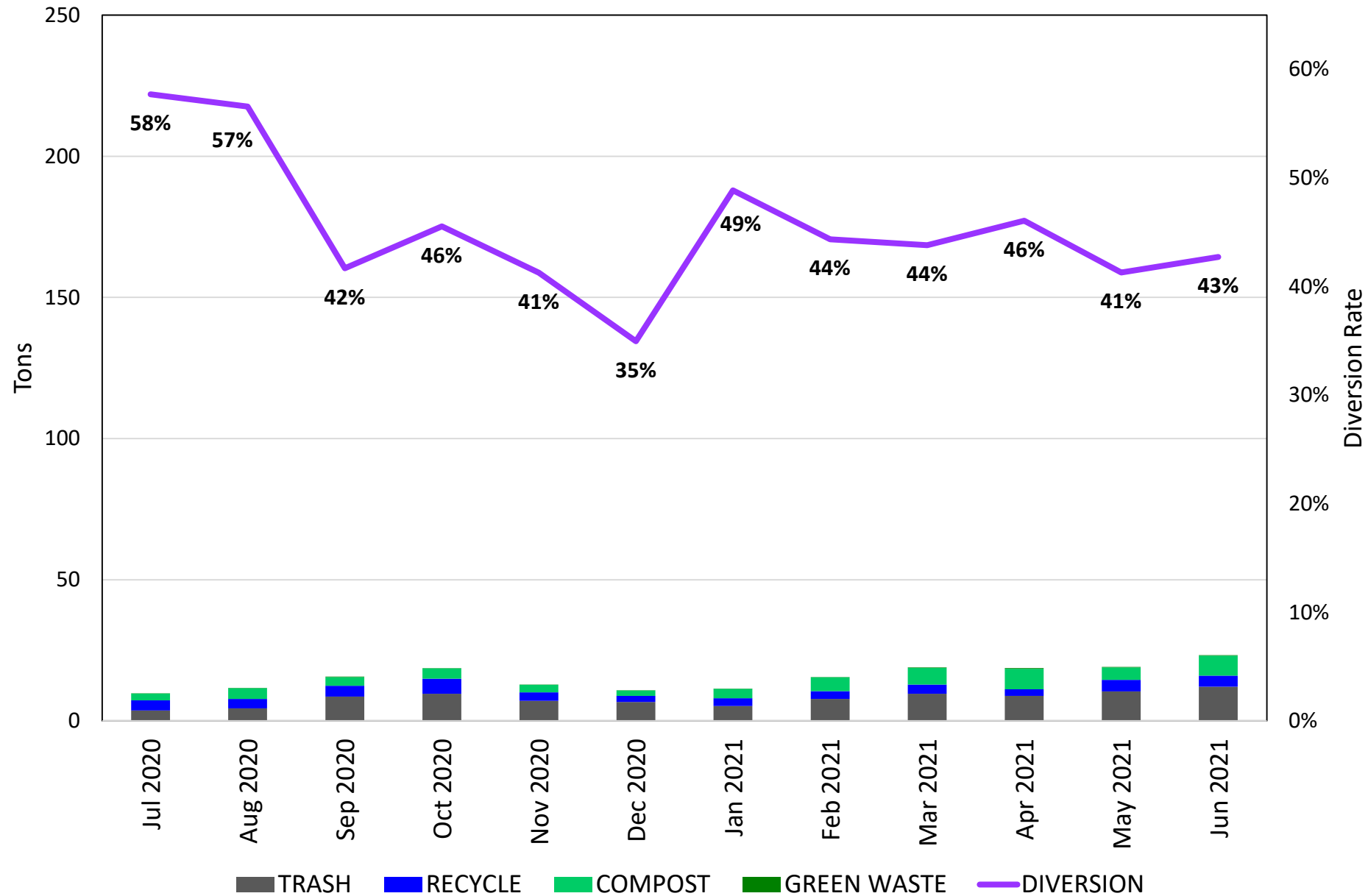
2020-21 FY Waste Tonnage and Diversion Rate for Asset Management



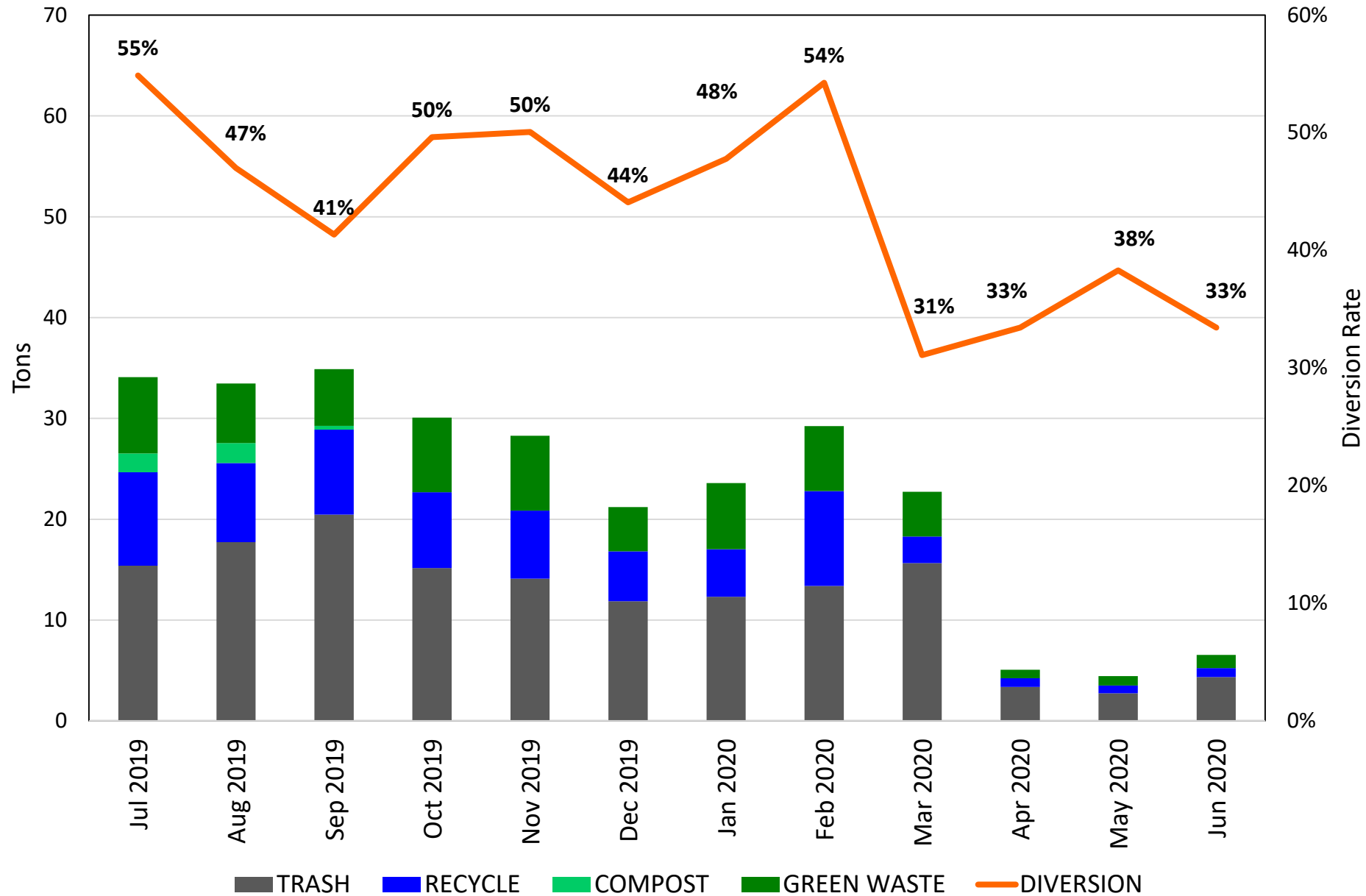
2019-20 FY Waste Tonnage and Diversion Rate for ASUCLA



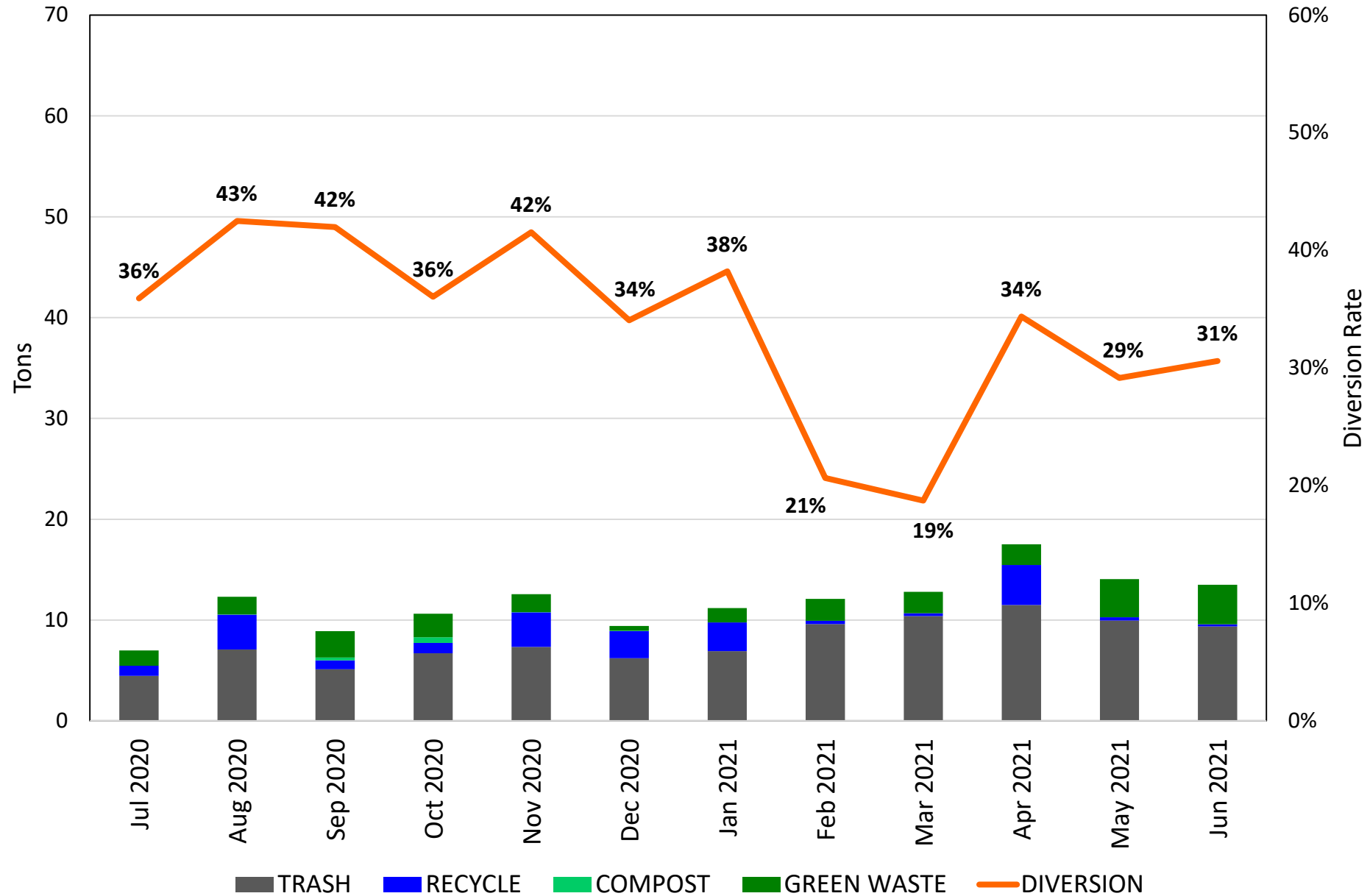
2020-21 FY Waste Tonnage and Diversion Rate for ASUCLA



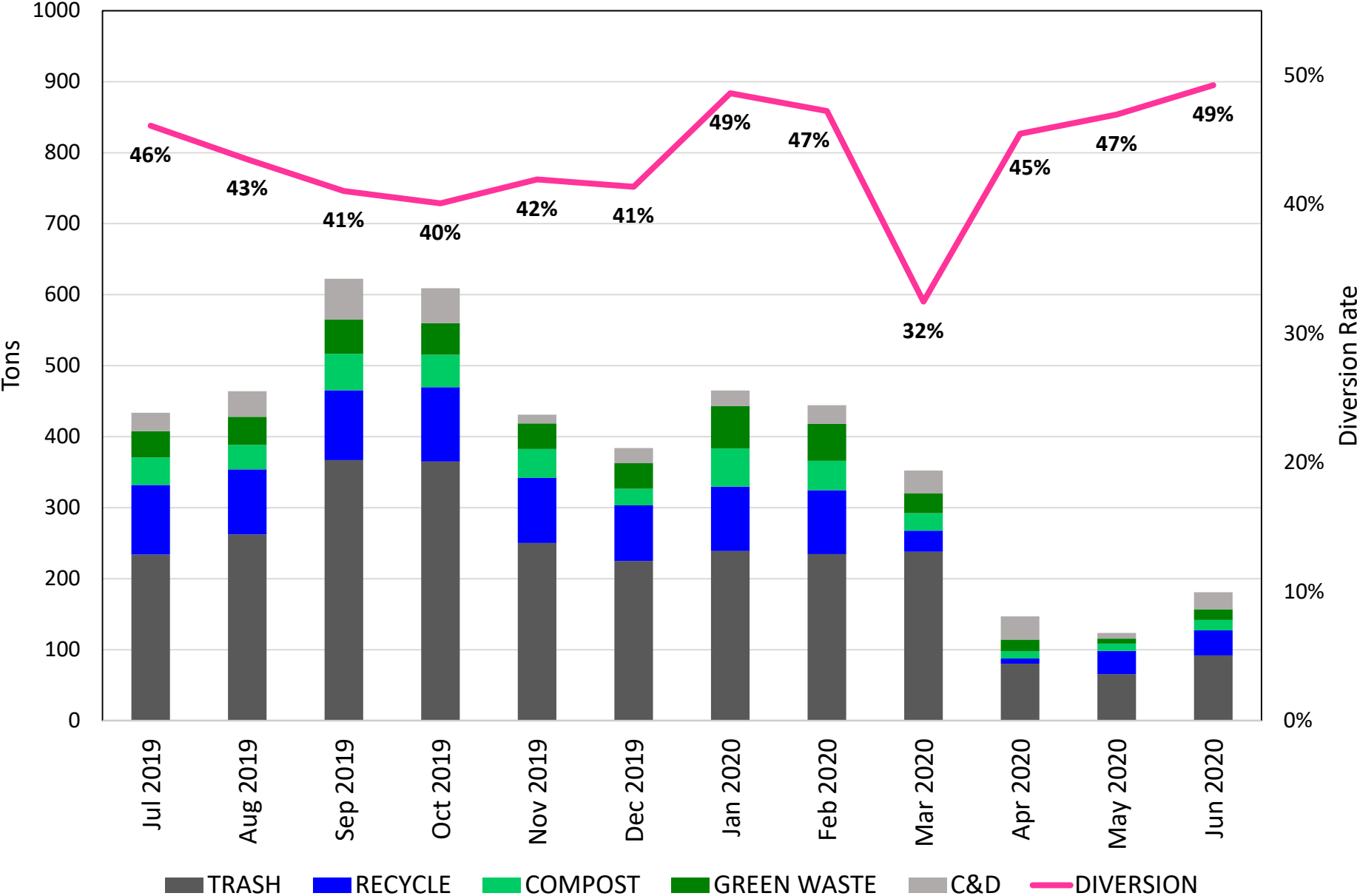
2019-20 FY Waste Tonnage and Diversion Rate for Athletics/Rec



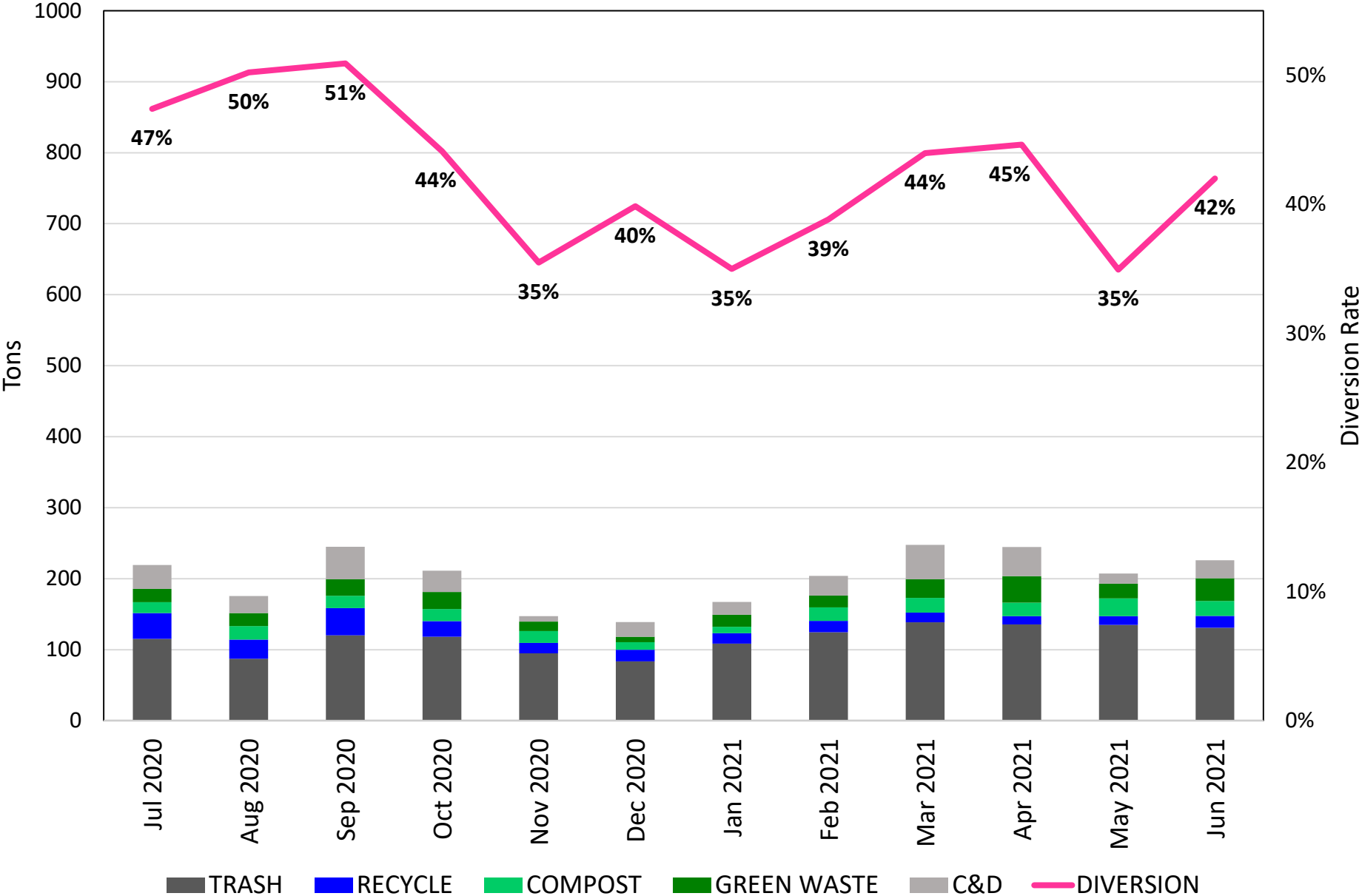
2020-21 FY Waste Tonnage and Diversion Rate for Athletics/Rec



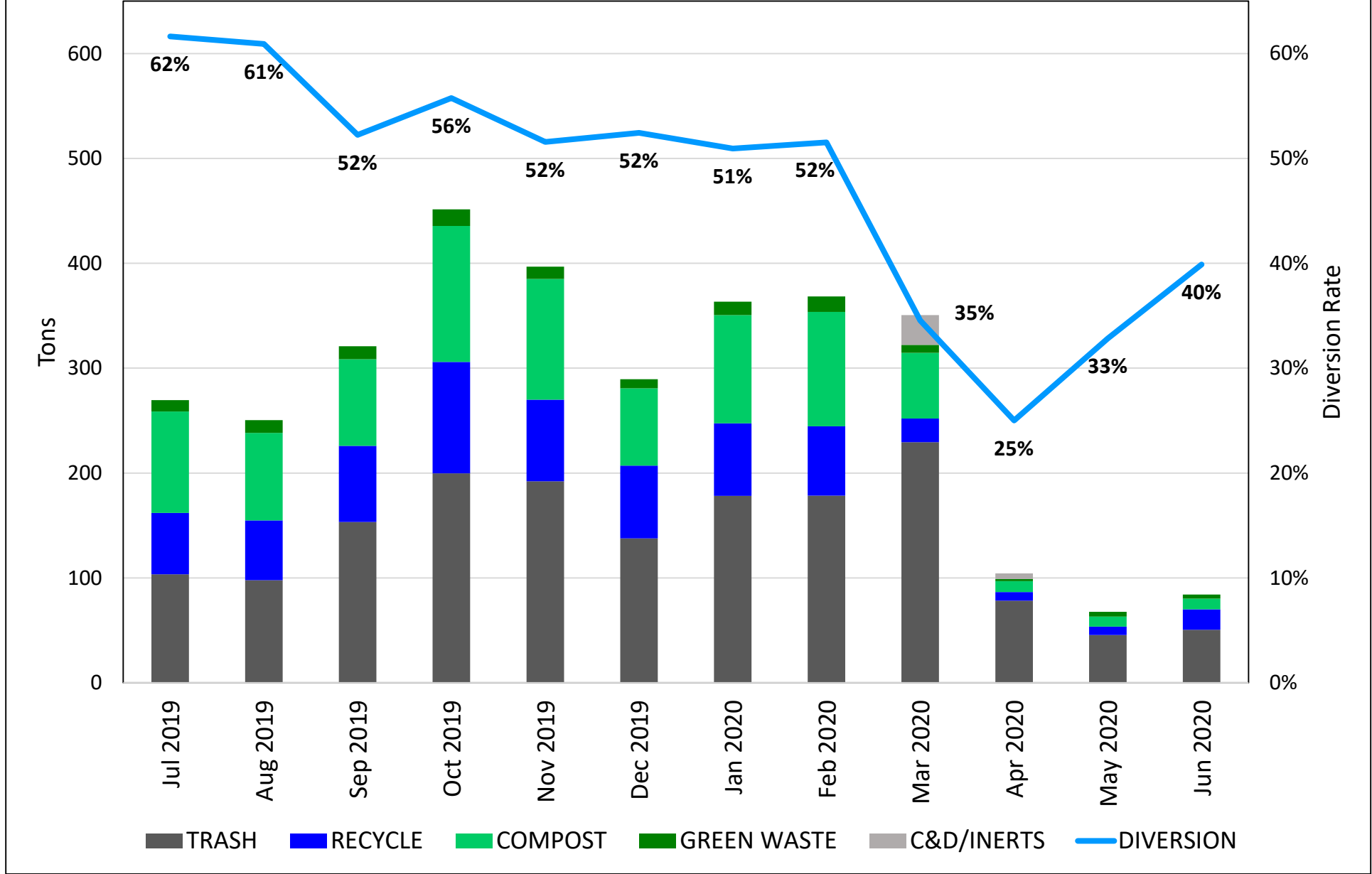
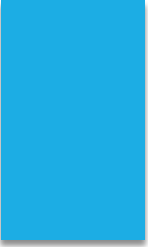
2019-20 FY Waste Tonnage and Diversion Rate for General Campus



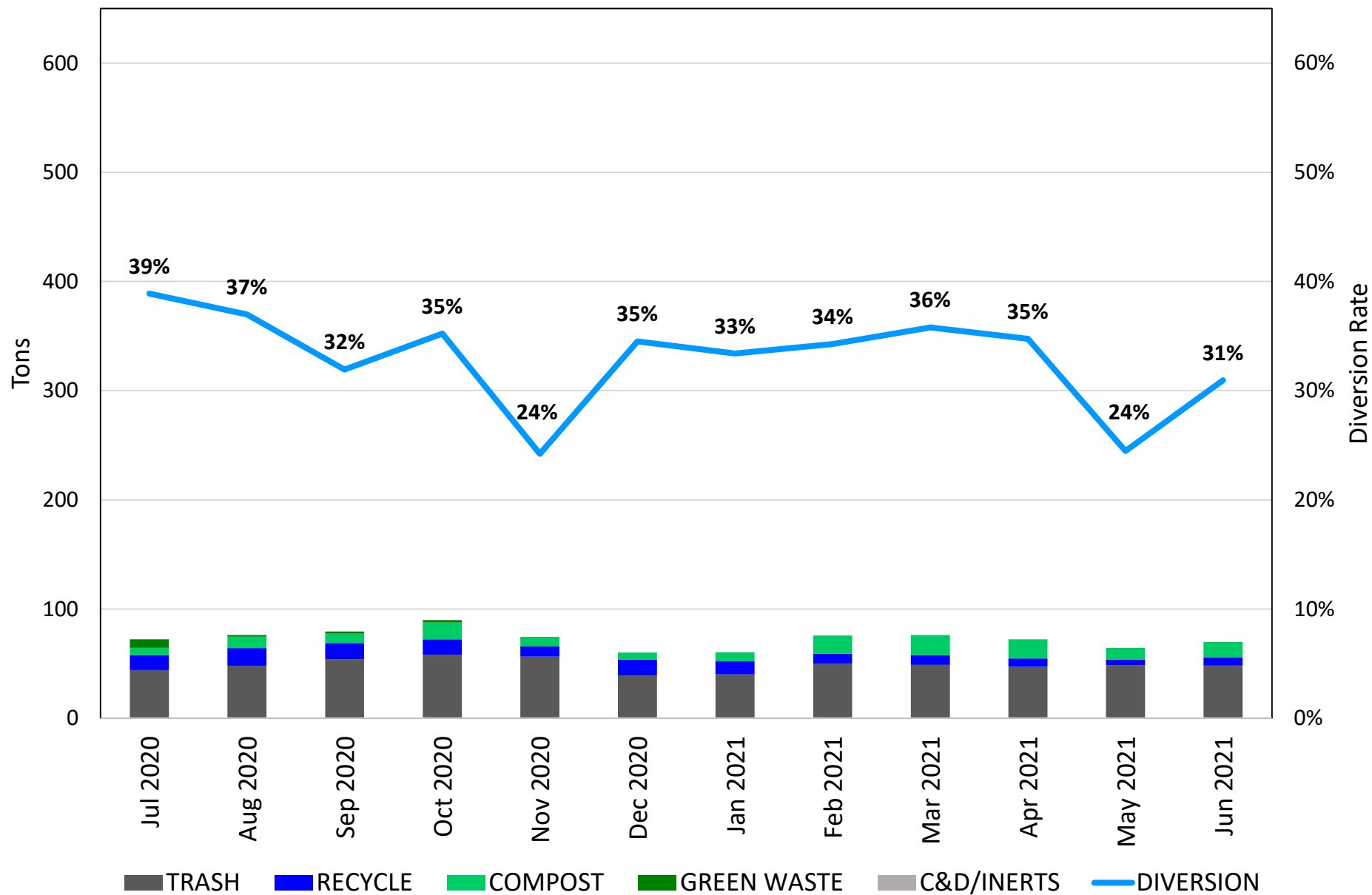
2020-21 FY Waste Tonnage and Diversion Rate for General Campus



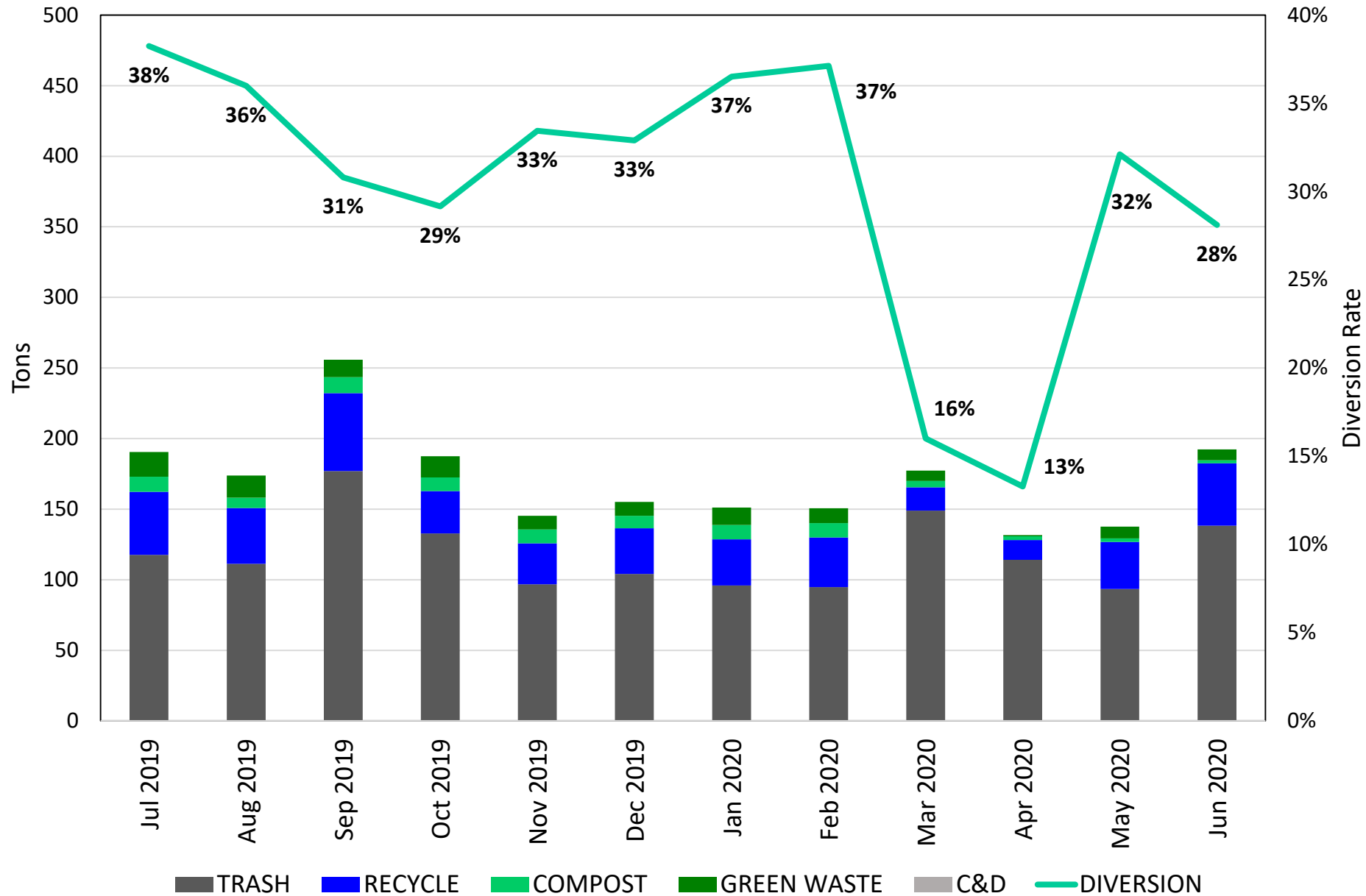
2019-20 FY Waste Tonnage and Diversion Rate for On Campus Housing



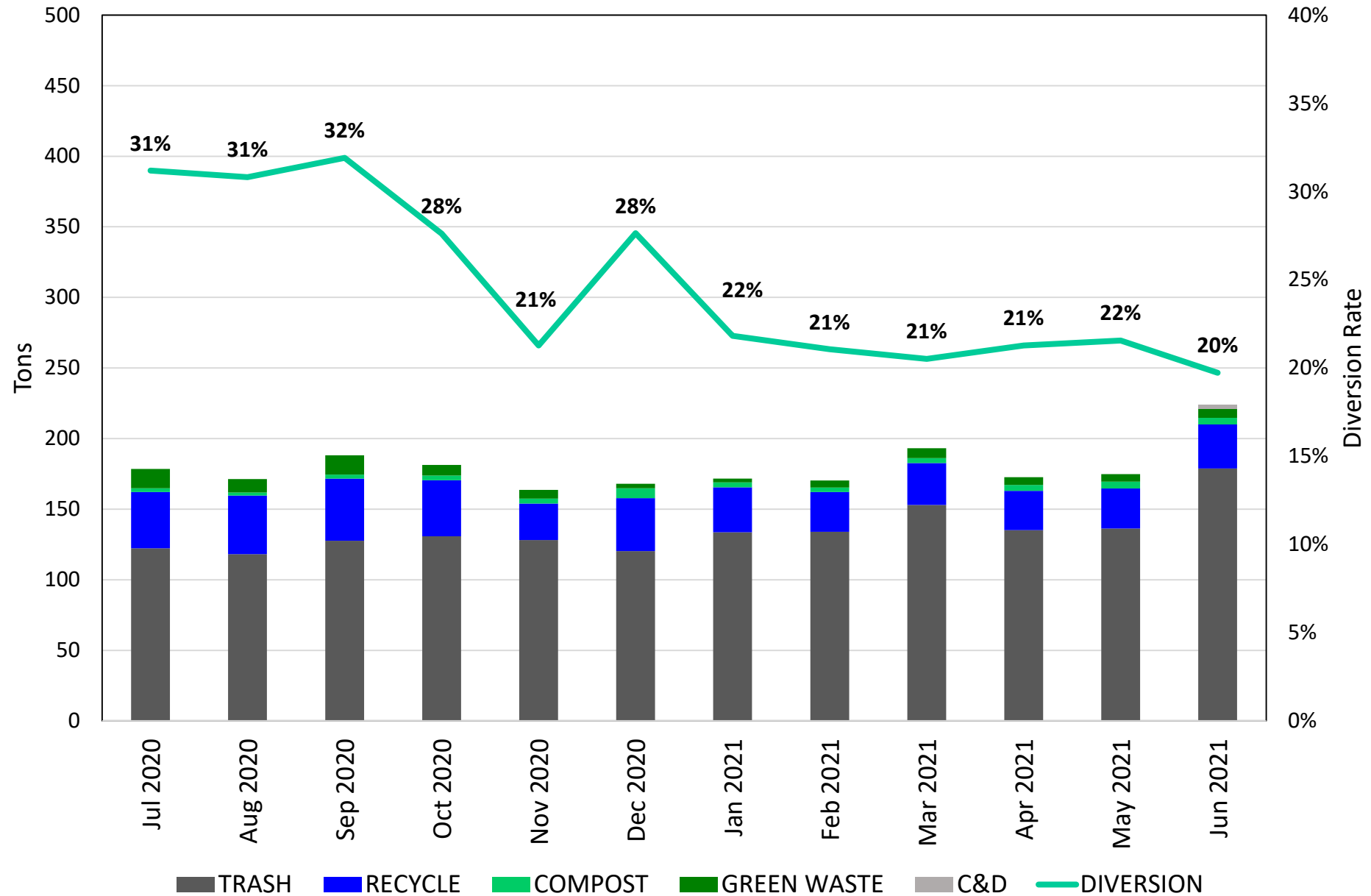
2020-21 FY Waste Tonnage and Diversion Rate for On Campus Housing



2019-20 FY Waste Tonnage and Diversion Rate for University Apts



2020-21 FY Waste Tonnage and Diversion Rate for University Apts



Appendix

- ▶ All tonnages were collected by UCLA's waste hauler, Athens Services.
- ▶ Data excludes temporary service bins for construction or one-time events.
- ▶ Data excludes service from other waste vendors for all material types including electronic waste, universal waste, landscaping mulch, cooking oil, metals, shredded paper, cardboard, batteries, books, ink cartridges, lightbulbs, and animal bedding.
- ▶ Data excludes service for the Blood & Platelet Center, Credit Union, Luskin Center, Tiverton House, and all of the UCLA Health medical buildings.
- ▶ Compost calculated with diversion rate of 83%.
- ▶ Construction and Demolition (C&D) calculated with diversion rate of 89%.
- ▶ Recycling and Green Waste calculated with diversion rate of 100%.
- ▶ Landfill (Trash) calculated with diversion rate of 0%.
- ▶ Diversion rates for each material type varied in March-April 2020 due to COVID-19.
- ▶ Not all buildings have their own bins, some buildings share a bin location.

Locations Per Department Account

Asset Management

- ▶ 924 Westwood
- ▶ Gayley Center
- ▶ Wilshire Center
- ▶ Wilshire Glendon Building

ASUCLA

- ▶ Ackerman Union
- ▶ Hill Top Shop
- ▶ LuValle Commons
- ▶ North Campus
- ▶ Court of Sciences Student Center (Bombshelter)

Locations Per Department Account

Athletics/Recreation

- ▶ Drake Stadium
- ▶ Easton Softball Stadium
- ▶ Jackie Robinson Stadium
- ▶ John Wooden Center
- ▶ Kinross Gym
- ▶ Kinross South
- ▶ LA Tennis Center
- ▶ Morgan Center
- ▶ Pauley Pavilion
- ▶ Sunset Canyon Recreation
- ▶ Upper Picnic Modular Unit

Locations Per Department Account

On Campus Housing

- ▶ Bradley Hall
- ▶ DeNeve Dining
- ▶ Dykstra/DeNeve Hall
- ▶ Hedrick Dining
- ▶ Hitch Suites
- ▶ Holly Hall
- ▶ Rendezvous Cafe
- ▶ Rieber Hall
- ▶ Saxon Suites
- ▶ Sproul Cove
- ▶ Sproul Hall
- ▶ Sproul Landing/Bruin Plate
- ▶ Southern Regional Library
- ▶ Covell Dining
- ▶ Sunset Village Hall
- ▶ Sproul Landing
- ▶ Guest House
- ▶ Dykstra Dock
- ▶ Gardenia Hall
- ▶ Strathmore Bradley
- ▶ Rieber Dining (Feast)
- ▶ 437 Gayley

Locations Per Department Account

General Campus

- ▶ Anderson School
- ▶ Boelter Hall
- ▶ Botany
- ▶ Boyer Hall
- ▶ Broad Art Center
- ▶ Bunche Hall
- ▶ Capital Programs
- ▶ CBS I
- ▶ Center of Health Sciences (CHS)
- ▶ Clark Library
- ▶ David Geffen School
- ▶ Dickson Plaza
- ▶ Dodd Hall
- ▶ Drake Stadium
- ▶ EH&S
- ▶ Engineering Complex
- ▶ Facilities Management
- ▶ Facilities Yard
- ▶ Faculty Center
- ▶ Fernald
- ▶ Fowler Museum
- ▶ Franz Hall
- ▶ Geffen Hall East
- ▶ Gonda Research
- ▶ Il Tramezzino
- ▶ Kerckhoff Hall
- ▶ Knudsen Hall
- ▶ Krieger Child Care Center
- ▶ Lab School
- ▶ Life Sciences
- ▶ Macdonald Research
- ▶ Macgowan Hall
- ▶ Marion Davies Children
- ▶ Murphy Hall
- ▶ Neuropsychiatric Institute
- ▶ Orthopedic Research Center
- ▶ Parking Structures 3,5,8,9
- ▶ Perloff Hall
- ▶ Plant Physiology
- ▶ Powell Library
- ▶ Public Affairs
- ▶ Public Health
- ▶ Public Policy
- ▶ Reed Neuropsychiatric Hospital
- ▶ Rehab Center
- ▶ Schoenberg Hall
- ▶ Slichter Hall
- ▶ Social Relations Lab
- ▶ Strathmore Building
- ▶ Terasaki Building
- ▶ Ueberroth Building
- ▶ University Resident
- ▶ West Medical
- ▶ Young Research Library

Locations Per Department Account

University Apartments

- ▶ 1500 Grandville Building
- ▶ Faculty Wilkins Apartments
- ▶ South Alley
- ▶ 558-564 Glenrock
- ▶ 625-641 Landfair
- ▶ 827 Levering
- ▶ 11130 Rose
- ▶ 11140 Rose
- ▶ 11811 Venice
- ▶ 3200 Sawtelle
- ▶ 3327 Sepulveda
- ▶ 3360 Sawtelle
- ▶ 3370 Sawtelle
- ▶ 3742 Clarington
- ▶ 3767 Mentone
- ▶ 3770 Keystone
- ▶ 3777 Mentone
- ▶ 3780 Keystone
- ▶ 456 Landfair
- ▶ 510 Landfair
- ▶ 555 Glenrock
- ▶ 558 Glenrock
- ▶ 625 Landfair
- ▶ 715 Gayley
- ▶ 720 Hilgard
- ▶ 824 Hilgard
- ▶ 885 Levering
- ▶ Aloe Court
- ▶ Cypress Court
- ▶ Faculty Weyburn
- ▶ Gayley Towers
- ▶ Jacaranda Court
- ▶ Olive Court
- ▶ Palm Court
- ▶ Sycamore Court
- ▶ Terrace 919
- ▶ Terrace 923
- ▶ Westwood 475
- ▶ Weyburn Paseo
- ▶ West Granville
- ▶ Weyburn Terrace